



# Preserving Live Product Quality

The DWS352 multi-function wet storage system is a complete system that allows quality of your live product to be maintained

- Large capacity water flow results in perfect oxygenation
- Drains to empty 100% in the event of a power failure
- Modular and easy to stack - provides great stability
- Traceability – RFID and Bar Code options available
- High water flow: 12 to 15,000 Litres per hour of flow suitable for shellfish cleaning
- Integrated water channels – no need for external piping
- Patented water circulation system for maximum flow of water
- Integrated grid waste separator
- Four lifting handles for ease of lifting
- Option lid is available

Enhanced quality is assured using the DWS352

Constructed from double-walled food-grade polyethylene and filled with polyurethane, the Saeplast DWS352 PUR multi-purpose container is ideal for the storage and purification of live oysters, clams & mussels. An even flow of water is maintained resulting in the perfect oxygenation of each individual shellfish.

This new concept is multi-functional and is a complete system that includes specific features that have been designed with the North American market in mind.

This Saeplast solution offers lifting handles on a 48" x 48" footprint polyethylene container that allows for the container to be used for harvesting on the water, transporting to the plant and within the plant for purging – all in one container system.

Like all Saeplast containers, the DWS352 container is ergonomically designed for maximum strength, ease of handling, stacking, and optimum hygiene. They are designed so that they stack perfectly together with or without lids.

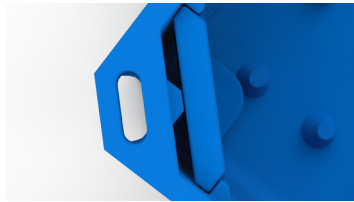
Lateral support for the grid is provided along the entire interior perimeter of the box, while corners are rounded for easy wash-down.

The Saeplast DWS352 comes with a host of built-in features, including integrated water channels and easy release plugs for rapid emptying. And, as the container operates without the need for any external pipe or drain connections, they are equally at home in both closed and open-looped systems.

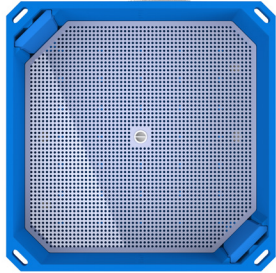
Like all Saeplast containers the DWS352 can be personalized with customer logos and specified with a variety of tracking options including barcodes, QR codes and RFID tags.



The DWS352 stack perfectly without lids.



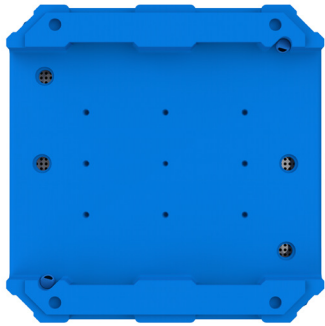
The patented corner water channels facilitate perfect water flow from container to container.



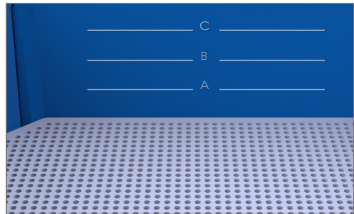
Bottom grid with removable plug secures the grid in place during dumping.



Integrated lifting handle for ease of lifting off of harvest vessel.



Four drain plugs allow for 100% emptying of the container in case of power failure.



Gradient lines on two walls allows operators to fill to different levels (the color highlights are for presentation purposes only).

Saeplast DWS352

| Outer Dimensions in inches / cm |          |             |             | Inner Dimensions in inches / cm |             |             | Weight - kg / lbs |         | Volume* |         |
|---------------------------------|----------|-------------|-------------|---------------------------------|-------------|-------------|-------------------|---------|---------|---------|
| L                               | W        | H           | H/w. lid    | L                               | W           | H*          | Box               | Lid     | Litres  | US gal. |
| 48 / 122                        | 48 / 122 | 23.5 / 59.7 | 25.5 / 64.8 | 45.25 / 115                     | 45.25 / 115 | 10.9 / 27.7 | 55 / 121          | 14 / 32 | 352     | 93      |

\*Grid plate to top gradient line

Any product information and directions on Saeplast's website, brochures, catalogues, price lists, technical publications and similar are not warranted. SAEPLAST products are constructed from EU/FDA approved food-grade materials. Dimensions and weights are +/- 2%. Temperature tolerances range from -30°C to +60°C. For cleaning max. 70°C.



A part of rotovia