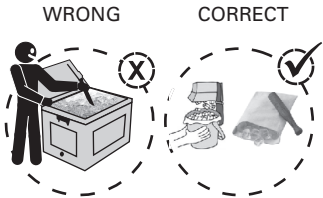




FDA/CFIA/HPB APPROVED

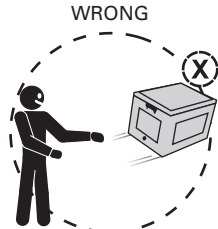
9 Do's & Don'ts to increase your product life cycle



WRONG

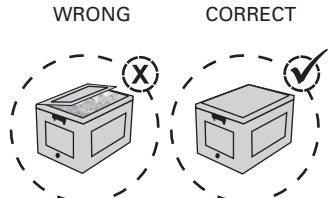
CORRECT

DO NOT CRUSH ICE INSIDE
THE PLASTIC BOX



WRONG

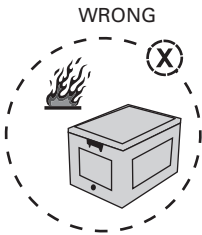
DO NOT THROW EMPTY
OR LOADED PLASTIC BOX
TO AVOID DAMAGES



WRONG

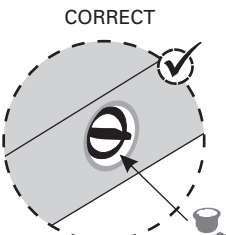
CORRECT

DO NOT OVERLOAD
THE PLASTIC BOX



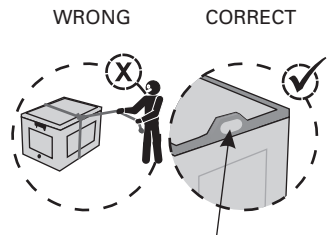
WRONG

KEEP THE PLASTIC BOX AWAY FROM
DIRECT FLAME OR HOT AIR



CORRECT

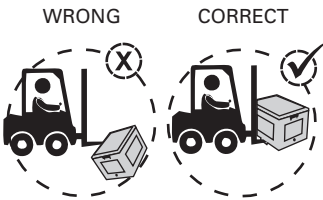
KEEP DRAIN CAPS
AT RIGHT PLACE



WRONG

CORRECT

ALWAYS USE THE HANDLES
WHEN LIFTING THE PLASTIC BOX



WRONG

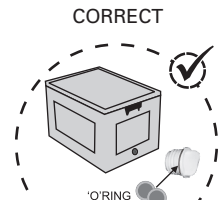
CORRECT

USE FORK LIFT WITH CARE WHEN
HANDLING THE PLASTIC BOX



WRONG

DO NOT OVER PULL
THE RUBBER STRAPS



CORRECT

ALWAYS USE RUBBER, O'RING
WITH DRAIN CAP FOR TIGHTNESS



Saeplast • Saint John, NB Canada • Phone +(1) 506 633 0101

Toll Free: +(1) 800 567 3966 • E-mail sales.sj@saeplast.com • <http://www.saeplast.com>