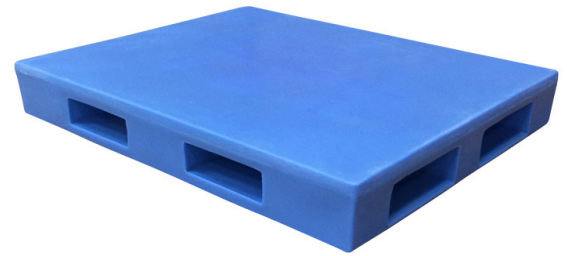


Pallets

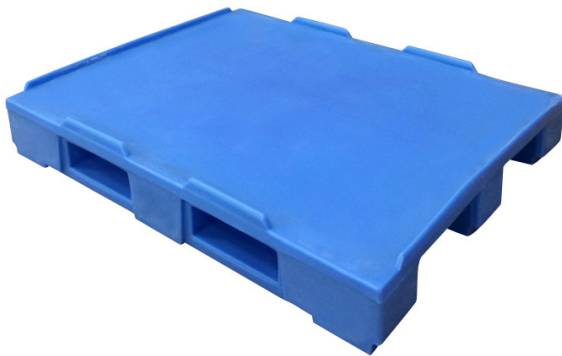


Constructed of durable polyethylene, Sæplast pallets represent a secure investment for both transportation and storage requirements. Flexible in design, hard-wearing and easy to clean, they are an ideal replacement for wooden pallets, with all their inherent disadvantages.

Easily handled by pallet jack or forklift, Sæplast pallets come in flat-top or raised-lip versions, and include features such as easy stackability and a non-skid rough surface (flat-top only) for added safety.



DP40C (flat top)



DP40FR (Flat Top With Ridged Edge)



DP40F (flat top)



DP40R (with edges)

All dimensions are in inches

Type	Description	Outside dimension			Weight
		L	W	H	Lbs
DP40R	Pallet with 1/2" "Ridged Edge & Slots"	48	40	6.7	48
DP40RB	Pallet with 1" "Ridged Edge & Slots"	48	40	6.9	48
DP40F	Pallet – Flat Top	48	40	6.5	48
DP40FR	Pallet – Flat Top With Ridged Edge	48	40	6.7	48
DP40C	4 way rackable pallet	48	40	6.5	48
DP40C-FR	Pallet – Flat Top With Ridged Edge - Rackable	48	40	6.7	48

The material used fully complies with food industry regulations. Dimensions and weights are +/-2%



PART OF RPC GROUP

SÆPLAST • Saint John, NB Canada • Phone: +1 506 633 0101 • Toll Free: +1 800 567 3966 or +1 800 665 3966

E-mail: sales.sj@saeplast.com • www.saeplast.com

© Sæplast is a Registered Trademark of RPC GROUP

